



**WOLFCELL™ CONTROL
PRODUCT DATA**

WOLFCELL™ CONTROL

COMPLETE SYSTEM CONTROL

Wolf Robotics introduces the next generation of WolfCell™ Controls. New features and new graphics gives you complete and total control. The industrial touch-screen is an easy-to-use intuitive navigation control of normal production functions, robotic fabricating cell operation and the welding process, all from one central point for the entire system.

The control provides an overview of the system and continual diagnostics of the cell performance. With configurable user profiles, full password protected user traceability is inherent throughout the design. The WolfCell Control replaces the robot teach pendant for operator interaction, which reserves the teach pendant for programmers and maintenance personnel. This protects the job program from accidental editing by unqualified operators.

Also Includes:

- Cell status Indicator
- Cycle time tracking
- Part counter
- Tailored graphics for each system layout
- Solid state hardware
- Ethernet communications

The WolfCell Control is available in multilingual displays [English, German, Spanish, Portuguese and others] and can control custom tooling, positioner jogging, and more.

Check out these important features to see how the WolfCell Control can improve your daily system operation.

- Operator Tracking
- System Diagnostics
- Service Functions
- Peripheral Equipment Monitoring
- Reports
- Options



Service Display Screen



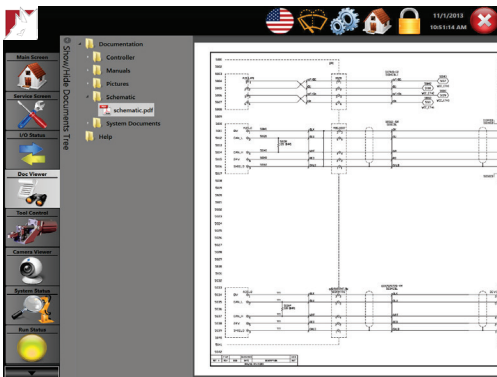
Main Screen Display

Title	Category	Timestamp	Error Code Sequence #
RV Arc Installation	Common	11/1/2013 3:34:58 PM	110466 343
Weld Error Recovery	Common	11/1/2013 3:34:58 PM	110460 342
Milner AutoAccess Installed	Common	11/1/2013 3:34:36 PM	112000 341
Motors OFF state	Common	11/1/2013 3:34:19 PM	10010 340
Automatic mode confirmed	Common	11/1/2013 3:34:18 PM	10017 339
Automatic mode requested	Common	11/1/2013 3:34:19 PM	10016 338
Manual mode selected	Common	11/1/2013 3:34:19 PM	10015 337
Safety guard stop state	Common	11/1/2013 3:34:19 PM	10012 336
Motors ON state	Common	11/1/2013 3:34:18 PM	10011 335
Automatic mode confirmed	Common	11/1/2013 3:34:17 PM	10017 334
Automatic mode requested	Common	11/1/2013 3:34:17 PM	10016 333
Milner AutoAccess Installed	Common	11/1/2013 3:34:14 PM	112000 332
Weld Error Recovery	Common	11/1/2013 3:34:13 PM	110460 331
Program stopped	Common	11/1/2013 3:34:10 PM	10129 330
ROB1 WCCRM3 Indicated	Common	11/1/2013 3:34:10 PM	80003 329
Wolf Message Handler Ready	Common	11/1/2013 3:34:10 PM	80003 328
Weld Error Recovery IO Interface	Common	11/1/2013 3:34:10 PM	110495 327
Program started	Common	11/1/2013 3:34:09 PM	10150 326
Program pointer has been reset	Common	11/1/2013 3:34:09 PM	10002 325

Error Log Display Screen

Signal Name	Device	Signal Type	Value	Description
diTOOL_PRESENT_R1	Controller 1	Digital Input	1	TOOL 1 PRESENT
diTOOL_CLAMPED_R1	Controller 1	Digital Input	1	TOOL 1 CLAMPED
diTOOL_DOCKED_R1	Controller 1	Digital Input	1	TOOL 1 DOCKED
diLASER_ALARM1_R1	Controller 1	Digital Input	0	LASER ALARM 1 R1
diSTN1_READY_R1	Controller 1	Digital Input	1	STATION 1 READY R1
dIRC_OK	Controller 1	Digital Input	1	LIGHT CURTAIN INTERLOCKED
diL2Z_OK	Controller 1	Digital Input	1	LIGHT CURTAIN 2 OK
diC1_OK	Controller 1	Digital Input	1	LIGHT CURTAIN 1 OK
diWATER_EST1_R1	Controller 1	Digital Input	1	WATER ESTABLISHED 1
diGAS_EST1_R1	Controller 1	Digital Input	0	GAS ESTABLISHED 1
diSS	Controller 1	Digital Input	1	Automatic Stop chain(DC5-5 to X5-6) and (DC5-9 to X5-10)
diAS1	Controller 1	Digital Input	1	Automatic Stop chain(DC0-11 to X5-6) and (DC5-9 to X5-10)
diES2	Controller 1	Digital Input	1	Emergency Stop backup(X10-7 and X10-8)
diEST1	Controller 1	Digital Input	1	Emergency Stop(X10-5 and X10-6)
diWeldOn_W1_R1	Controller 1	Digital Output	0	Turn Weld On
diMON_STATE	Controller 1	Digital Output	0	

I/O Status Display Screen



Document Viewer Display Screen



Document Viewer Display Screen

System Diagnostics

A graphical view of all cell components provides quick and easy reference to problem areas. A system status page will allow visual identification of critical components and support drill-down access to assembly drawings, spare parts, electrical schematics and B.O.M.'s for diagnostics and service.

- Pictorial view and status of cell devices
- Access to system documentation
- I/O listing with real-time status
- Simplified troubleshooting
- Recommended spare parts list

Reports

Valuable cell-specific data can be accessed to measure productivity and manufacturing results with the WolfCell Control. This allows you to monitor cell downtime, production output, equipment effectiveness, maintenance and other important tools of measurement.

Standard reports include:

- Cell downtime report
- Cell productivity report

Optional reports include:

- Total Production Maintenance (TPM) report
- Overall Equipment Effectiveness (OEE) report

Note: Other reports can be included or created to the customers specifications and requirements.

Service Functions

The operator can access a control panel for common service procedures without using the robot teach pendant. This simplifies equipment operation and restricts the operator to appropriate functions by user access level.

Typical service functions include:

- Indexing to station or home position
- Moves to service position
- Checking or updating TCP
- Process initialization or deactivation

Peripheral Equipment

The WolfCell Control can be configured to monitor and control peripheral equipment to insure their proper operation and function. A control screen display will provide quick reference to the I/O status to determine status and aid in troubleshooting.

Options

A number of optional screens and features are available to address any concerns you have for your specific system. Options can include providing more secure logins using ID cards, control of custom tooling/fixtures, monitoring of power sources, managing consumables and spare parts and utilizing tracking reports for productivity measurements. Consult the factory for which features would be of most value based on your system components.

- Remote Diagnostic Access
- Power source monitoring
- Custom tool control
- Spare parts and consumables stock management
- Employee ID card reader
- Manual Jog
- Tooling Control

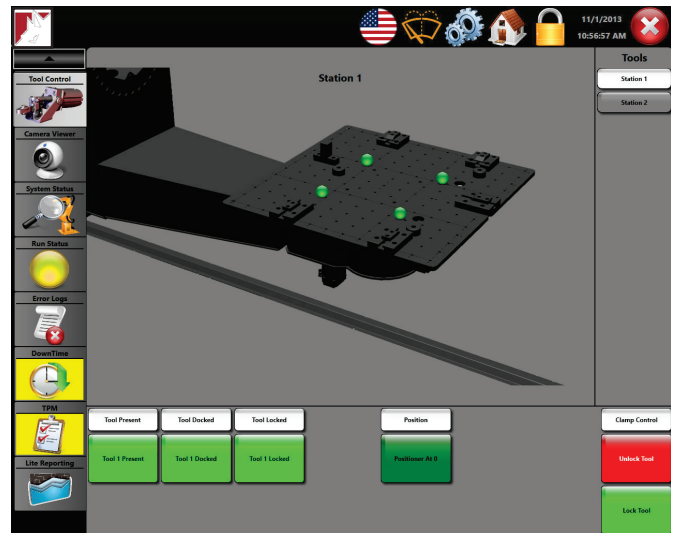


Manual Jog Display Screen

Operator Tracking

Keeping tabs on the operators will allow you to determine their productivity and identify problem areas for streamlining the production process.

- All events are trackable to the responsible person
- User log-in required for system access
- Varying levels of control to restrict operation
- Simplified user interface at different levels
- Optional I/O card readers can speedup the process



Tooling Control Display Screen

CUSTOMER ASSISTANCE POLICY

The Lincoln Electric Company is manufacturing and selling high quality welding equipment, consumables, and cutting equipment. Our challenge is to meet the needs of our customers and to exceed their expectations. On occasion, purchasers may ask Lincoln Electric for information or advice about their use of our products. Our employees respond to inquiries to the best of their ability based on information provided to them by the customers and the knowledge they may have concerning the application. Our employees, however, are not in a position to verify the information provided or to evaluate the engineering requirements for the particular weldment. Accordingly, Lincoln Electric does not warrant or guarantee or assume any liability with respect to such information or advice. Moreover, the provision of such information or advice does not create, expand, or alter any warranty on our products. Any express or implied warranty that might arise from the information or advice, including any implied warranty of merchantability or any warranty of fitness for any customers' particular purpose is specifically disclaimed.

Lincoln Electric is a responsive manufacturer, but the selection and use of specific products sold by Lincoln Electric is solely within the control of, and remains the sole responsibility of the customer.

Many variables beyond the control of Lincoln Electric affect the results obtained in applying these types of fabrication methods and service requirements.

Subject to Change – This information is accurate to the best of our knowledge at the time of printing. Please refer to www.wolfrobotics.com for any updated information.



Wolf Robotics
A Lincoln Electric Company

4600 Innovation Drive
Fort Collins, CO 80525

+1 866-WOLF-789 TOLL FREE
+1 970-225-7600 PHONE
+1 970-225-7700 FAX

WOLFROBOTICS.COM
INFO@WOLFROBOTICS.COM

866-WOLF-789



All trademarks and registered trademarks are the property of their respective owners.

© Wolf Robotics, A Lincoln Electric Company. All Rights Reserved